

## Key Investor Information

This document provides you with key investor information about this Fund. It is not marketing material. The information is required by law to help you understand the nature and the risks of investing in this Fund. You are advised to read it so you can make an informed decision about whether to invest.

### Class I Income Shares GBP (ISIN IE00BDV09T15)

### London & Capital Global Star Equity Fund (the 'Fund'), a sub-fund of GemCap Investment Funds (Ireland) PLC (the 'Company')

The Fund is managed by Gemini Capital Management (Ireland) Limited which acts as manager to the Company

## Objective and Investment Policy

The investment objective is to seek to provide growth through investments in a full range of global equities (meaning shares in companies).

The Fund is considered to be actively managed in reference to the MSCI World Minimum Volatility (USD) Index (the "Index") by virtue of the fact that the Fund uses the Index as a performance target whereby the Fund seeks to produce longer term absolute total returns with lower volatility than the Index. The Index is deemed a measure of global equity returns. However, the Fund may deviate materially from the Index and the Investment Manager may use its discretion to invest in holdings which do not form part of the Index.

Investments will be made in what the Investment Manager considers to be 'star equities': that is listed equity instruments of companies headquartered in western markets (i.e. North America, the UK and Western Europe) where the company has a strong franchise, low leverage (meaning low borrowings), sound fundamentals (in terms of its business offering and its industry) and a solid shareholder yield track record (meaning the growth or dividends which it has generated for its shareholders).

The Fund will generally invest on the basis of its view that the value of a security will grow over the medium term and use a proper country and sector allocation in order to provide a proper diversification

and avoid excessive risk concentration in particular areas.

The Fund may invest up to 10 % of its net assets in aggregate in other collective investment schemes.

The Fund may adopt specialist financial techniques (using instruments known as derivatives, including exchange-traded futures and options) and may enter into securities lending agreements. The use of derivatives will involve leverage.

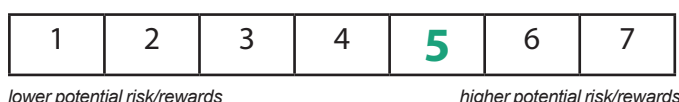
The Company may, at its discretion, declare dividends (i.e. income arising from Shares will be paid out, subject to Directors approval).

Investors can buy and sell shares in the Fund on every business day meaning a day on which banks in Ireland and on which the relevant stock exchange is open for normal business subject to the 'Dealing Days for Subscription and Redemptions' and the 'Issue of Shares' and 'Redemption of Shares' section of the Supplement.

Recommendation: This Fund may not be appropriate for short-term investment.

For full details please refer to the 'Investment Objective and Policy', 'Issue of Shares' and 'Redemption of Shares' sections of the Supplement and 'The Shares' section of the Prospectus.

## Risk and Reward Profile



The indicator above illustrates the position of this Fund on a standard risk/ reward category scale.

This indicator is based on historical data and may not be a reliable indication of the future risk profile of the Fund. The risk and reward category shown is not guaranteed to remain unchanged and may change over time. The lowest category does not mean investment is 'risk free'. This indicator is not a measure of the risk that you may lose the amount you have invested.

The Fund is categorised as a 5 because it is invested in a in full range of global equities.

The following are risks materially relevant to the Fund which are not adequately captured by the indicator:

**Derivative (financial techniques) Risk:** The Fund is entitled to use derivative instruments for efficient portfolio management. Derivatives may not achieve their intended purpose. Their prices may move up or down significantly over relatively short periods of time which may result in losses greater than the amount paid. This could adversely impact the value of the Fund. The Fund may enter into various

financial contracts (derivatives) with another party. There is a risk that this party will become insolvent or fail to make its payments which may result in the Fund and your investment suffering a loss. Where the Fund uses futures or forward foreign currency contracts (derivatives), it may become exposed to certain investment risks including leverage, market, mismatching of exposure and/or counterparty risk, liquidity, interest rate, credit and management risks and the risk of improper valuation. While the Fund is not expected to have exposure to leverage to a material degree, any movement in the price of these investments can have a significant impact on the value of the Fund and the Fund could lose more than the amount invested.

For a more detailed explanation of the risks, please refer to the "Risk Factors" section of the Prospectus and Supplement.

## Charges

The charges you pay are used to pay the costs of running the Fund, including the costs of marketing and distributing it. These charges reduce the potential growth of your investment.

One off charges deducted before or after you invest	
Entry charge 5.00%	This is the maximum that might be taken out of your money before it is invested and before the proceeds of your investment are paid out.
Exit charge None	
Charges taken from the Fund over a year	
Ongoing charges: 1.17%	
Charges taken from the Fund under certain specific conditions	
Performance Fees: None	

The entry and exit charges shown are maximum figures. In some cases you might pay less.

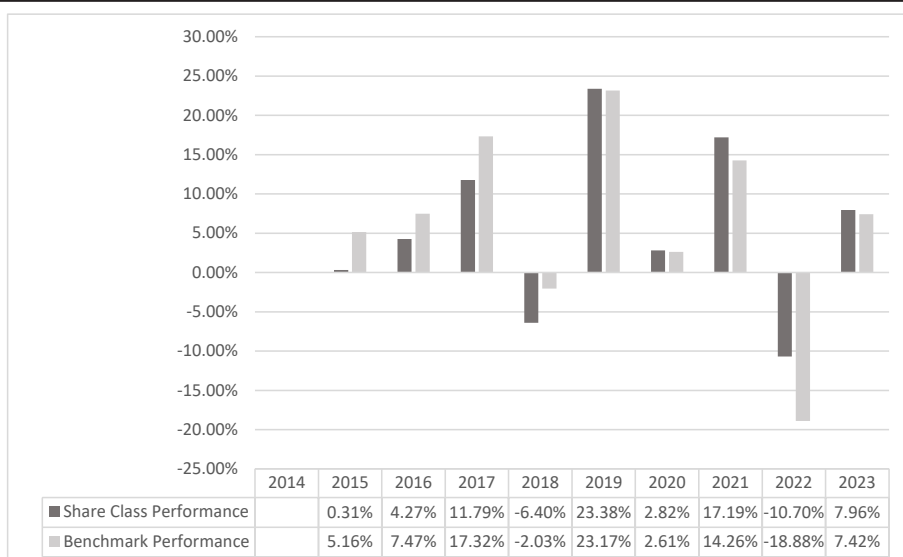
The on-going charges shown are based on the year ending 31 December 2023 but may vary from year to year.

It excludes portfolio transaction costs, except in the case of an entry/exit charge paid by the Fund when buying or selling another collective investment undertaking.

An anti-dilution levy of up to 2% may be charged on redemptions of 5% or greater of the total net assets of the Fund.

For more information about charges, please refer to the 'Fees, Charges and Expenses' section of the Prospectus and Supplement.

## Past Performance



The past performance shown in the chart opposite takes into account all charges.

Past performance shown is not a guide to future performance.

Past performance has been calculated in the base currency of the Fund which is US Dollars.

The Fund compares its performance in the chart opposite to the MSCI World Minimum Volatility (USD) Index.

The Fund was approved by the Central Bank of Ireland on 29 November 2013 and the share class was launched on 31 January 2014.

## Practical Information

**Depository:** Caceis Investor Services Bank S.A., Dublin Branch.

**Prices of shares and further information:** Further information about the Fund (including copies of the current Prospectus and most recent financial statements, free of charge) is available in English at the Company's registered office at 7th Floor, Block A, One Park Place, Upper Hatch Street, Dublin 2, D02 E762, Ireland. Other practical information, including the Net Asset Value per Share for the Fund is available from the Administrator's registered office and at [www.geminicapital.ie](http://www.geminicapital.ie).

The Fund is a sub-fund of the Company which is an umbrella fund with segregated liability between sub-funds and accordingly any liability incurred on behalf of or attributable to any sub-fund shall be discharged out of the assets of that sub-fund. Investors may redeem their shares in the Fund (or a portion thereof) by submitting a redemption request on a business day (prior to the Dealing Deadline) provided that they satisfy the criteria applicable to an investment in the Fund. Investors may switch shares in the Fund for shares in another class in the Fund or in other sub-funds of the Company, provided that they satisfy the criteria applicable to investments in the other sub-funds. Further information on switching is contained in the Prospectus. This document describes a share class of a sub-fund of the Company and the Prospectus and financial statements are prepared for the entire Company.

More specific information about this share class and other share classes of the Fund are available in the Prospectus and Supplement issued in relation to the Fund.

**Remuneration Policy:** Details of the up-to-date remuneration policy of Gemini Capital Management (Ireland) Limited, including but not limited to, a description of how remuneration and benefits are calculated and the identity of persons responsible for awarding the remuneration and benefits, are available at [www.geminicapital.ie](http://www.geminicapital.ie). A hard copy version of the remuneration policy will be made available, free of charge, upon request.

**Tax:** The Fund is subject to Irish taxation legislation, which may have an impact on your personal tax position as an investor in the Fund. Investors should consult their own tax advisers before investing in the Fund.

Gemini Capital Management (Ireland) Limited may be held liable solely on the basis of any statement contained in this document that is misleading, inaccurate or inconsistent with the relevant parts of the Prospectus for the Fund.

The Company is authorised in Ireland and regulated by the Central Bank of Ireland.

Gemini Capital Management (Ireland) Limited is authorised in Ireland and regulated by the Central Bank of Ireland.

This Key Investor Information is accurate as at 19 February 2024.